

Service Offering Overview

# Complex Program Management

---

Leadership & Execution

Transformation. Modernization. Integration.

Chances are, your organization has a program with one of these words in the title. The pace of technological advancement in practically every industry demands more frequent reimagining and reinvention - of platforms, organizations, business processes, and often all the above.

In an environment where complexity and unpredictability are standard, such huge undertakings can feel like you're building the plane while flying it.

How do you align and coordinate the vast array of resources, systems, and people to reach your desired destination?

## WHAT WE DO

Further Advisory brings experienced leaders and proven practices to deliver clarity to complex initiatives, supporting you in multiple ways - all with the goal of taking your programs from strategy to reality.

### Program Mobilization

We instill tested disciplines and routines to jump start your new program and put it on the path for success, bringing you along on this journey so that you can take over the reins and execute flawlessly.

### Rapid Program Assessment

For existing programs, we can provide a health check that covers all the important bases. We'll go further by identifying systemic opportunities to get back on track and position you for sustained success across your entire project portfolio.

### Program Execution

We bring objectivity, grounded in practical experience, to complex programs, reconciling disparate internal agendas with pragmatic solutions that efficiently and effectively achieve your goals.

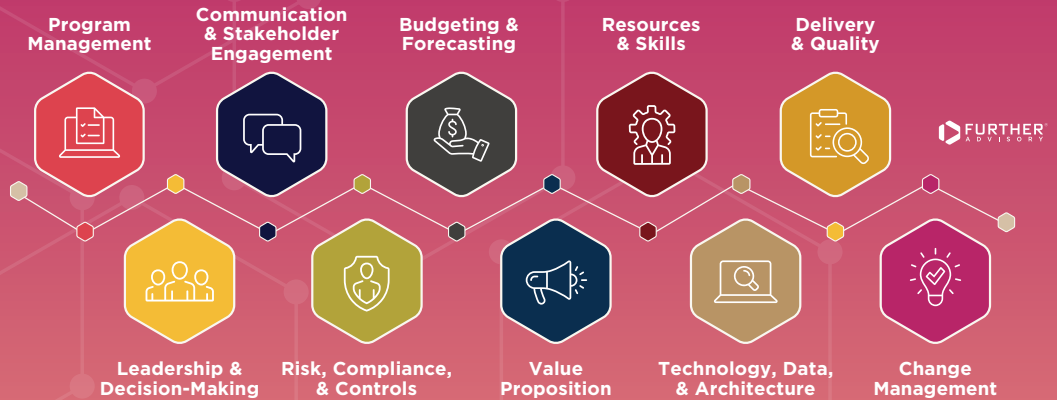
### Program Retrospective

Our work doesn't end when the program does. We dive deep to identify the key success drivers, illuminating actionable insights and tailored improvement strategies for replicating your success.

## OUR APPROACH

We draw from our 10-dimension framework for Complex Program Management, leaving no stone unturned as we cover the important fundamentals of program management and execution.

But frameworks are only part of our formula for success. We take it further, arming you with a team of tenured leaders who bring the skills and experience required to traverse your business's unique complexities and execute with excellence.



## ABOUT FURTHER

We are a boutique management consultancy focused on converting strategic vision into business reality. We always go the extra mile, equipping our clients with critical insights and plans for navigating challenges and accelerating change.



**Michael Morley**  
Partner

CONTACT US!

[hello@furtheradvisory.com](mailto:hello@furtheradvisory.com)

